



The IP-67 certified enclosure.

HIGH-SPEED INFRARED CAMERAS.

The FAST-IR series includes the fastest infrared cameras available on the market. To analyze dynamic events, the FAST-IR infrared cameras allow high-speed thermal imaging with an impressive temporal resolution at a rapid frame rate. These high-performance infrared cameras are extremely sensitive, enabling the detection of challenging targets.

KEY BENEFITS

ULTRAHIGH FRAME RATE

Maximum data throughput is larger than 1 Gigabit/s. High performance electronics produce thermal images at rates of up to 1 012 fps. Sub-windows can even be acquired at rates higher than 40 000 fps.

HIGH-SPEED INTERNAL MEMORY

16 GB (expandable) memory for autonomous operation.

HIGH SENSITIVITY

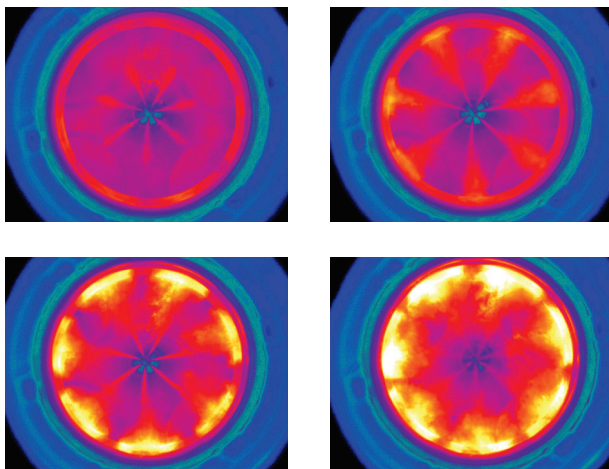
Temperature differences as small as 25 mK are detectable.

ADVANCED CALIBRATION

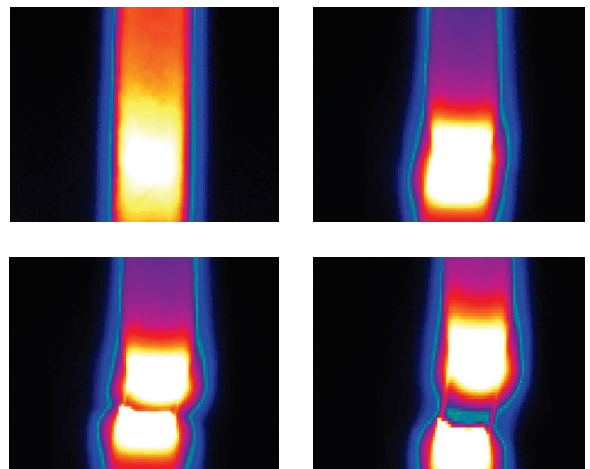
Unique proprietary real-time processing of infrared images including NUC, radiometric temperature, automated exposure control (AEC) and enhanced high-dynamic-range imaging (EHDMI). With these unique features, scientists benefit from ease of use and operation flexibility while getting accurate measurements over the entire camera's operation range.

EXAMPLES OF TYPICAL USES

Observation of fuel injection

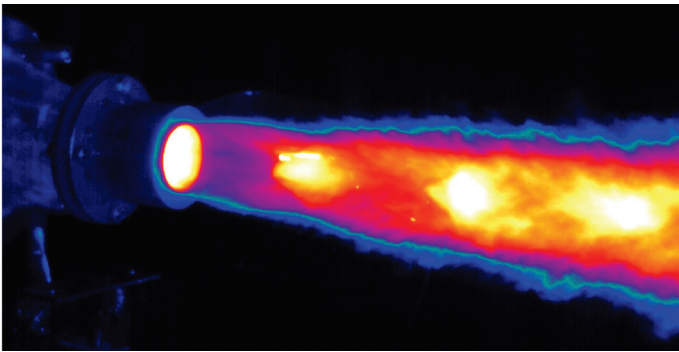


Tensile testing of a steel rod

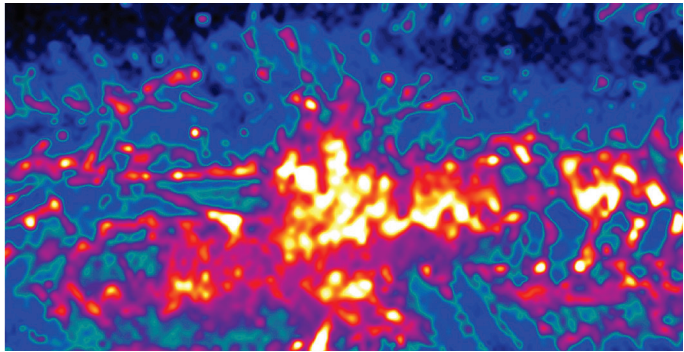


FAST M1k	
SPECIFICATIONS	FAST M1k
DETECTOR TYPE	Cooled InSb
SPECTRAL RANGE	1.5 μm to 5.4 μm
SPATIAL RESOLUTION	640 × 512 pixels
DETECTOR PITCH	25 μm
APERTURE SIZE	F/2.5
FRAME RATE	1 012 Hz
MAXIMUM FRAME RATE	11 000 Hz @ 64 × 64 40 000 Hz @ 64 × 8
ENVIRONMENTAL RESISTANCE	IP67
OPERATIONAL SHOCK	IEC-60068-2-27
OPERATIONAL VIBRATION	IEC-60068-2-64
OPERATIONAL TEMPERATURE	-15 °C to +50 °C
STORAGE TEMPERATURE	-35 °C to +60 °C
TYPICAL NETD	25 mK
EXPOSURE TIME	0.27 μs to full frame rate
LENS MOUNT	Bayonet interface

The FAST M1k is also available with LN2 Dewar!



Pulsed detonation rocket engine



Impact of a projectile in the back of a composite material

OTHER SPECS & FEATURES	
Rotary-stirling closed cycle sensor cooling	Gig-E
Blackbody-free permanent calibration (up to 150 °C)	Camera Link
Calibration up to 2 500 °C (optional)	Trigger In, Trigger Out
16 bits dynamic range	SDI, GPS, IRIG-B, RS232 and thermistor ports
High-speed internal memory buffer: up to 32 GB	Lock-In (optional)
Automatic exposure control (AEC)	Weight w/o lens: < 6 kg
Enhanced high-dynamic-range imaging (EHDMI)	Size w/o lens: 12.6" × 7.8" × 6.9" 321 mm × 199 mm × 176 mm

FOR MORE INFORMATION | TELOPS.COM

TELOPS HEADQUARTERS
contact@telops.com
Tel.: +1 (418) 864-7808

TELOPS USA
vince.morton@telops.com
Tel.: +1 (831) 419-7507

TELOPS FRANCE
eric.guyot@telops.com
Tel.: +33 1 70 27 71 34

TELOPS CHINA
zhaoyongg@vip.sina.com
Tel.: +86 13801185178