

High performance intensified CMOS camera

iLumos RED 5G

NEW

The iLumos RED 5G, the latest innovation from Exosens, is equipped with the recently launched 5G IIT (Image Intensifier Tube) and sets a new standard for imaging excellence. Designed with a compact, SWaP-optimized architecture, it delivers exceptional sensitivity, superior DRI (Detection, Recognition, Identification) capabilities, and unmatched dynamic range in both extrascene and intrascene conditions.

Advanced on-board denoising and discintillation algorithms ensure crisp, reliable imagery even in the most demanding environments, making it ideal for integration into next-generation defense and surveillance systems.



5G Image Intensifier Tube and CMOS Sensor



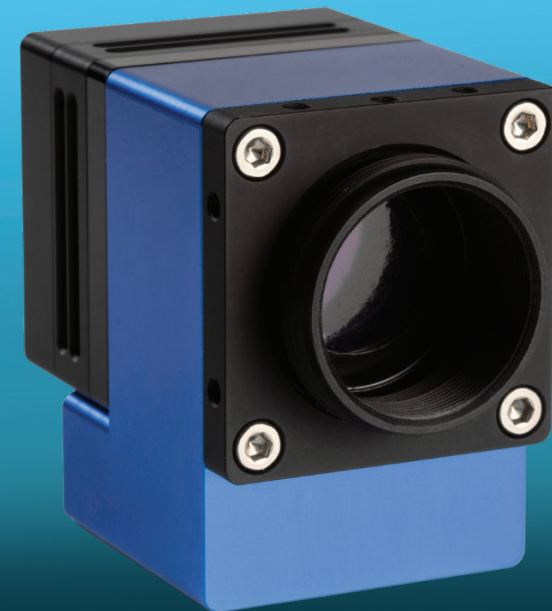
High Resolution SWaP Imagery



High Extrascene Dynamic Driven by SoA IIT



Superior DRI and Image Quality



High performance intensified CMOS camera for outstanding quality imaging

Key Technical Data:

High resolution	2048 x 2048 pixels
Lens mount	C-Mount
Power consumption	~3.3 W
Video outputs	16bit DV, CL, UVC, MIPI, SDI

Images At All Night Levels:



NL 1 (145.4 mlx) NL 2 (10.8 mlx) NL 3 (3.53 mlx) NL 4 (0.98 mlx) NL 5 (0.33 mlx)

Powering Vision Through Innovation



Integration-Ready Design



Tailored Image Processing



Optimized Coupling



Full EU Ownership

   [exosens.com](https://www.exosens.com) | advancedimaging@exosens.com

© Exosens. The information furnished is believed to be accurate and reliable but is not guaranteed and is subject to change without notice. No liability is assumed by Exosens nor by any Exosens Group companies. Performance data represents typical characteristics as individual product performance may vary. Customers should verify that they have the most current Exosens product information before placing orders. Texts and pictures may not be considered as contractually binding. This document may not be reproduced, in whole or in part, without the prior written consent of Exosens.

EXOSENS
REVEAL THE INVISIBLE

iLumos RED 5G

NEW

