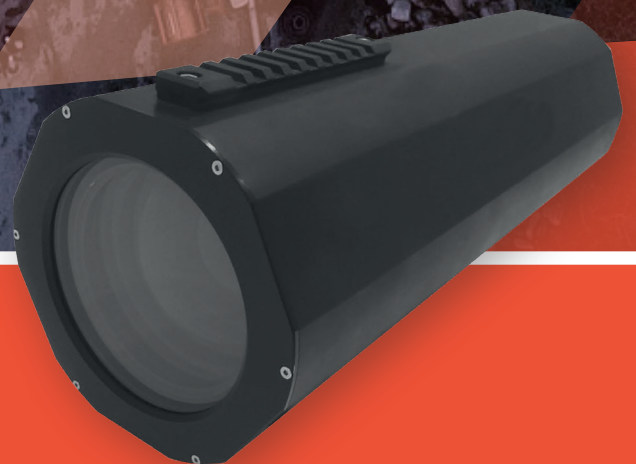
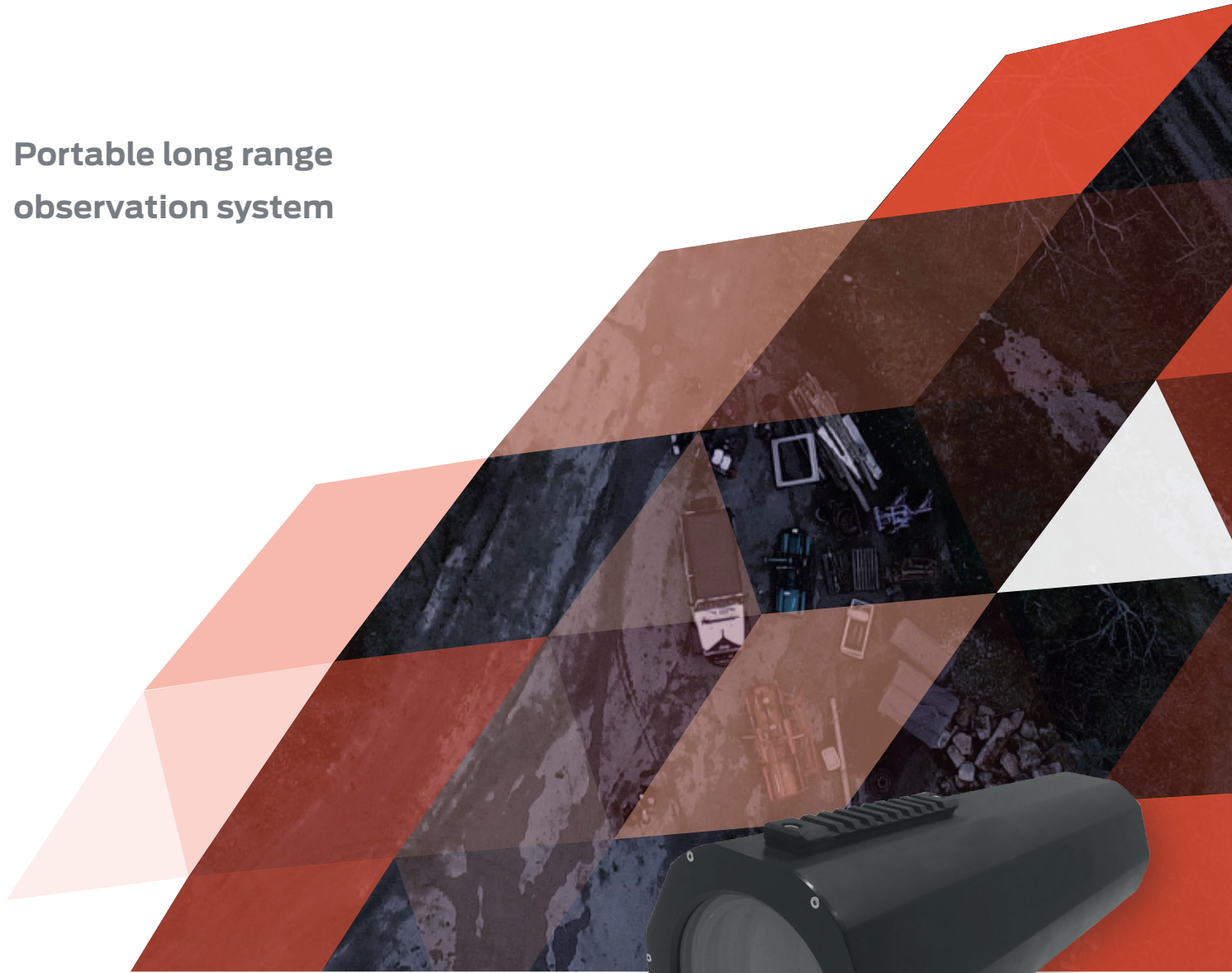


# VERSATILE **24/7** IMAGING

**Portable long range  
observation system**



## **SR750**

**Built in partnership with SYT Technologies**

The SR750 is a long-range camera with powerful zoom and adapted ergonomics for rapid deployment. With its long range capabilities, the SR750 is the best solution for various observation and intelligence missions.

Thanks to the very high level performance of its sensor coupled with a very high quality optics, the SR range is very efficient from day to night.

## Key Features:

- High sensitivity EBCMOS camera for day and low light vision
- 23-750 mm focal length
- Zoom X33 in focus
- Ethernet or wireless connection
- On batteries for +6 hours autonomous
- Robust, lightweight and waterproof



	SR750-P-DNW	SR750-P-DCW
<b>SENSOR</b>		
Technology	Low light CMOS Nocturn camera	
Type	B&W CMOS	
Application	Day to night	
Wavelength	350 -1100 nm	350 - 650 nm
Sensitivity	10 mLux	40 mLux
Resolution	1280 x 1024 pixels	
Pixel size	9,7 X 9,7 µm	
<b>VIDEO</b>		
Frame rate	50 Hz or 60 Hz	
Video output	Analog & IP	
<b>TELEMETRY</b>		
Communication	Serial & IP	
<b>OPTIC</b>		
Optical zoom	x33	
Focal	23 mm - 750 mm	
HFOV - NFOV	15 ° - 0,9 °	
Aperture	F4.5 -48	
IRIS	Auto	
Focus	Manual focus or auto	

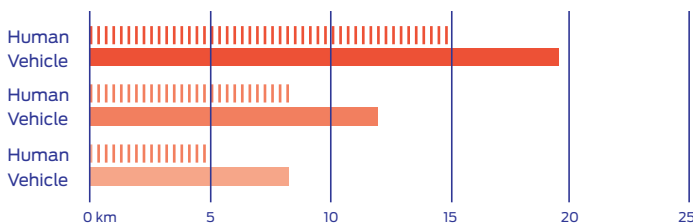
	SR750-P-DNW	SR750-P-DCW
<b>ELECTRICAL SPECIFICATIONS</b>		
Input voltage	10 Vdc-18 Vdc	
Power consumption	Typical < to 9W with remote control	
Buffer battery <sup>1)</sup>	Typical 10 minutes	
<b>CONNECTORS</b>		
Supply + Video + RS485 + Trigger	XLR or customs (see SYT)	
Digital video + Data	RJF TV or customs (see SYT)	
<b>DIMENSIONS &amp; WEIGHT</b>		
Dimensions (cm)	45 x 13 x13	
Weight	< 5.3 kg	
<b>ENVIRONMENTALS CONDITIONS</b>		
Operating temperature	-10 ° C + 45 ° C	
Stockage	-20 ° C +60 ° C	
Sealing	IP66	
Shock	IK08 without porthole and opties	
<b>FIXATION</b>		
Mounting fixation	Specific dovetail	
Accessory fixation	Picatinny rail (11 cm long)	

1) Buffer battery: The camera has an internal battery (10-minute shutdown adjustable on request) that allows the user to change the power source from cold to hot without stopping the camera and/or recording. This internal battery is automatically charged when an external power supply is used.

## DRI: DETECTION RECOGNITION AND IDENTIFICATION

- Detection
- Recognition
- Identification

### SR750-P-DNW / SR750-P-DCW



Calculating TRM4 according to Johnson criteria @ 50% with visibility : 23 km / Target refl. 0,3 / Ground refl. 0,15 / Att 0,1 Km-1  
 Human size 1,80 x 0,70 cm  
 Vehicle size : 2,3 x 2,3 m

Contact us at  
[digitalvision@photonis.com](mailto:digitalvision@photonis.com)



[www.photonis.com](http://www.photonis.com)

The Information provided in this document is believed to be accurate and reliable but it is not guaranteed as such and is subject to change without notice. No liability is assumed for its use. Performance data represents typical characteristics as individual product performance may vary. Customers should ensure that they have up-to-date Photonis product information before placing orders. Text and pictures are not contractually binding. Photonis makes no representations or warranties as to the application of Photonis products. This document may not be reproduced, in whole or in part without the prior written consent of Photonis.